

Golmar

Kit's



A world of solutions



Kits

Come in and discover
our wide offer of kits
A careful selection
of products and systems
to match any requirements
for villas and small buildings



With Rock vandal resistant panel

*The combination of its aesthetics
with the IP-44 and IK-09 protection indexes,
make this panel suitable for most environments.
Two and five wires technologies
have been applied for both audio and video systems.*



With Stadio Plus panel

*A contemporary design embraces
outstanding features,
by taking advantage of being pioneers
in the development of digital communication systems.*





RO
))) AUG



Weather resistant
IP-44



Vandal resistant
IK-09

Mechanical characteristics.

- ⇨ Curved front of 2.5mm.thick injected aluminium.
- ⇨ 4mm.thick polycarbonate card holding window.
- ⇨ Double walled sound grille that prevents access to the sound circuit.
- ⇨ Metal push buttons flushed with the panel.
- ⇨ Security screws with special key.
- ⇨ Includes embedding box.
- ⇨ Dimensions: external: 144(W) x 144(H)mm.
embedded: 131(W) x 131(H) x 45(D)mm.
- ⇨ Surface installation is available by using MP-VIS/AL optional surface box, of 32mm. depth only that also includes the rain shield.

Electronic characteristics.

- ⇨ Audio systems with 4+'n' or 2 wires installation, that allows the replacement of an existing bell.
- ⇨ Electronic call with acoustic acknowledgement signal.
- ⇨ Nameplate illumination.
- ⇨ To be used with 12Va.c. lock releases.

K-201/AL

1 way audio kit with 4+'n' installation, composed by:
PE-295/1 AL one push button door panel.
T-900 electronic call telephone.
TF-104 transformer.

K-221/AL

1 way audio kit with 4+'n' installation, composed by:
PE-295/1 AL one push button door panel.
T-902 electronic call telephone with additional push button.
TF-104 transformer.

K-202/AL

2 ways audio kit with 4+'n' installation, composed by:
PE-295/2 AL two push buttons door panel.
2 units of T-900 electronic call telephone.
TF-104 transformer.

K-2 AL

1 way audio kit with 2 wires installation, composed by:
PE-292 AL one push button door panel.
T-920 electronic call telephone.
TF-104 transformer.

K-22 AL

1 way audio kit with 2 wires installation, composed by:
PE-292 AL one push button door panel.
T-922 electronic call telephone with additional push button.
TF-104 transformer.



1 push button



2 push buttons



VIS-295/AL
Rain shield



MP-VIS/AL
Surface box

ck
dio(((

Golmar

Kits

Common characteristics.

- ⇒ Casing manufactured in ABS RAL9003 white color.
- ⇒ High sensitivity microphone with anti-feedback filter.
- ⇒ Electronic call.
- ⇒ Detachable telephone cord with connectors.
- ⇒ Dimensions: 96(W) x 225(H) x 51(D)mm.

T-900 and T-902 models.

- ⇒ 4 + 'n' installation.
- ⇒ Contact free additional push button on T-902 telephone.
- ⇒ Up to three telephones inside of the same apartment.

T-920 and T-922 models.

- ⇒ 2 wires installation.
- ⇒ Three positions call volume regulator.
- ⇒ Contact free additional push button on T-922 telephone.
- ⇒ Additional telephones are not allowed.



T-902 and T-922



T-920 and T-922





Mechanical characteristics.

- ⇨ Curved front of 2.5mm. thick injected aluminium.
- ⇨ 4mm. thick polycarbonate card holding window.
- ⇨ Double walled sound grille that prevents access to the sound circuit.
- ⇨ Metal push buttons flushed with the panel.
- ⇨ Security screws with special key.
- ⇨ Includes embedding box.
- ⇨ Dimensions: external: 144(W) x 240(H)mm.
embedded: 139(W) x 234(H) x 58(D)mm.

Electronic characteristics.

- ⇨ Audio system with 4 + 'n' installation.
- ⇨ Electronic call with acoustic acknowledgement signal.
- ⇨ Nameplate illumination.
- ⇨ To be used with 12Va.c. lock releases.

K-203

3 ways audio kit with 4 + 'n' installation, composed by:
PE-295/3 three push buttons door panel.
3 units of T-900 electronic call telephone.
TF-104 transformer.

K-204

4 ways audio kit with 4 + 'n' installation, composed by:
PE-295/4 four push buttons door panel.
4 units of T-900 electronic call telephone.
TF-104 transformer.

K-206

6 ways audio kit with 4 + 'n' installation, composed by:
PE-295/6 six push buttons door panel.
6 units of T-900 electronic call telephone.
TF-104 transformer.

K-208

8 ways audio kit with 4 + 'n' installation, composed by:
PE-295/8 eight push buttons door panel.
8 units of T-900 electronic call telephone.
TF-104 transformer.

ck
dio((((

golmar

Kits

Mechanical characteristics.

- ⇒ Casing manufactured in ABS RAL9003 white color.
- ⇒ Detachable telephone cord with connectors.
- ⇒ Dimensions: 96(W) x 225(H) x 51(D)mm.

Electronic characteristics.

- ⇒ 4 + 'n' installation.
- ⇒ Electronic call.
- ⇒ High sensitivity microphone with anti-feedback filter.
- ⇒ Up to three telephones inside of the same apartment.



PE-295/3



PE-295/4



PE-295/6



PE-295/8



VIS-295/1M
Rain shield



Stadio
))) AUG

Mechanical characteristics.

- ⇨ Front of 1.8mm thick aluminium with sandy finish.
- ⇨ Inox covered push buttons.
- ⇨ Easily seen light button for nameplate illumination.
- ⇨ Includes embedding box.
- ⇨ Dimensions: external: 134(W) x 148(H)mm.
embedded: 125(W) x 140(H) x 56(D)mm.
- ⇨ Surface installation is available by using 871/AL optional surface box, of 32mm. depth only that also includes the rain shield.

Electronic characteristics.

- ⇨ Audio system with 4+'n' installation.
- ⇨ Electronic call with acoustic acknowledgement signal.
- ⇨ To be used with 12Va.c. lock releases.

4110/AL

1 way audio kit with 4+'n' installation, composed by:
One push button door panel.
T-900 electronic call telephone.
TF-104 transformer.

4220/AL

2 ways audio kit with 4+'n' installation, composed by:
Two push buttons door panel.
2 units of T-900 electronic call telephone.
TF-104 transformer.



1 push button



2 push buttons



711/AL
Rain shield



871/AL
Surface box

D Plus

Audio)))

Golmar

Kits

Mechanical characteristics.

- ⇨ *Casing manufactured in ABS RAL9003 white color.*
- ⇨ *Detachable telephone cord with connectors.*
- ⇨ *Dimensions: 96(W) x 225(H) x 51(D)mm.*

Electronic characteristics.

- ⇨ *4+'n' installation.*
- ⇨ *Electronic call.*
- ⇨ *High sensitivity microphone with anti-feedback filter.*
- ⇨ *Up to three telephones inside of the same apartment.*





Stadio
))) AUG

Mechanical characteristics.

- ⇨ *Front of 1.8mm thick aluminium with sandy finish.*
- ⇨ *Inox covered push buttons.*
- ⇨ *Easily seen light button for nameplate illumination.*
- ⇨ *Includes embedding box.*
- ⇨ *Dimensions: external: 134(W) x 228(H)mm.
embedded: 125(W) x 220(H) x 56(D)mm.*
- ⇨ *Surface installation is available by using 875/AL optional surface box, of 32mm. depth only that also includes the rain shield.*

Electronic characteristics.

- ⇨ *Audio system with 4+'n' installation.*
- ⇨ *Electronic call with acoustic acknowledgement signal.*
- ⇨ *To be used with 12Va.c. lock releases.*

4130/AL

3 ways audio kit with 4+'n' installation, composed by:
Three push buttons door panel.
3 units of T-900 electronic call telephone.
TF-104 transformer.

4140/AL

4 ways audio kit with 4+'n' installation, composed by:
Four push buttons door panel.
4 units of T-900 electronic call telephone.
TF-104 transformer.

4150/AL

5 ways audio kit with 4+'n' installation, composed by:
Five push buttons door panel.
5 units of T-900 electronic call telephone.
TF-104 transformer.

4260/AL

6 ways audio kit with 4+'n' installation, composed by:
Six push buttons door panel.
6 units of T-900 electronic call telephone.
TF-104 transformer.

4280/AL

8 ways audio kit with 4+'n' installation, composed by:
Eight push buttons door panel.
8 units of T-900 electronic call telephone.
TF-104 transformer.

4210/AL

10 ways audio kit with 4+'n' installation, composed by:
Ten push buttons door panel.
10 units of T-900 electronic call telephone.
TF-104 transformer.

Plus



Kits

Mechanical characteristics.

- ⇒ Casing manufactured in ABS RAL9003 white color.
- ⇒ Detachable telephone cord with connectors.
- ⇒ Dimensions: 96(W) x 225(H) x 51(D)mm.

Electronic characteristics.

- ⇒ 4+'n' installation.
- ⇒ Electronic call.
- ⇒ High sensitivity microphone with anti-feedback filter.
- ⇒ Up to three telephones inside of the same apartment.



3 push buttons

4 push buttons

5 push buttons

6 push buttons

8 push buttons

10 push buttons

705/AL
Rain shield

875/AL
Surface box



RO
))) Vic



Weather resistant
IP-44



Vandal resistant
IK-09

Mechanical characteristics.

- ⇨ Curved front of 2.5mm.thick injected aluminium.
- ⇨ 4mm.thick opaque polycarbonate camera window.
- ⇨ Adjustable pan and tilt camera mechanism.
- ⇨ Double walled sound grille that prevents access to the sound circuit.
- ⇨ Metal push buttons flushed with the panel.
- ⇨ Security screws with special key.
- ⇨ Includes embedding box.
- ⇨ Dimensions: external: 144(W) x 144(H)mm.
embedded: 131(W) x 131(H) x 45(D)mm.
- ⇨ Surface installation is available by using MP-VIS/AL optional surface box, of 32mm. depth only that also includes the rain shield.

Electronic characteristics.

- ⇨ Video systems with 2 or 5 wires installation. The first one allows the replacement of an existing bell.
- ⇨ CCD b/w or color camera with infrared or white leds respectively, for night conditions illumination.
- ⇨ Electronic call with acoustic acknowledgement signal at the door panel (on 5 wires kits only).
- ⇨ To be used with 12Va.c. lock releases (on 5 wires kits) or 12Vd.c. lock releases (on 2 wires kits).

SV-805/AL

1 way video kit with 5 wires installation, composed by:
PV-395/AL one push button door panel.
Platea 5 monitor with connector.
FA-805 power supply.

SV-805/AL COLOR

1 way video kit with 5 wires installation, composed by:
PV-395/AL COLOR one push button door panel.
Platea 5 COLOR monitor with connector.
FA-805 power supply.

SV-802/AL

1 way video kit with 2 wires installation, composed by:
PV-292/AL one push button door panel.
Platea 2 monitor with connector.
FA-802 power supply.

SV-802/AL COLOR

1 way video kit with 2 wires installation, composed by:
PV-292/AL COLOR one push button door panel.
Platea 2 COLOR monitor with connector.
FA-802 power supply.



1 push button b/w



1 push button color



VIS-295/AL
Rain shield



MP-VIS/AL
Surface box

ck
deo (((

golmar

Kits

Common characteristics.

- ⇨ Casing manufactured in ABS RAL9003 white color.
- ⇨ Reversible front plate color (gray and blue colors).
- ⇨ Detachable telephone cord with connectors.
- ⇨ 4" b/w flat tube screen or "A Grade" color TFT LCD.
- ⇨ Brightness and contrast (color) adjustments.
- ⇨ High sensitivity microphone with anti-feedback filter.
- ⇨ Electronic call.
- ⇨ Contact free additional push button.
- ⇨ Autoswitch-on function (1 extra wire is required on systems with 5 wires installation).
- ⇨ Dimensions: 200(W) x 220(H) x 71(D)mm.

Platea 5 and Platea 5 COLOR models.

- ⇨ 5 wires installation.
- ⇨ Two additional telephones (2 wires installation) can be placed in parallel (T-901 or T-901VD models).

Platea 2 and Platea 2 COLOR models.

- ⇨ 2 wires installation.
- ⇨ Additional monitors or telephones are not allowed.



Platea 5 COLOR and Platea 2 COLOR





Stadio
))) Vie
))) Dig

Mechanical characteristics.

- ⇨ Front of 1.8mm thick aluminium with sandy finish.
- ⇨ Camera window manufactured in opaque polycarbonate.
- ⇨ Adjustable pan and tilt camera mechanism.
- ⇨ Inox covered push buttons.
- ⇨ Easily seen light button for nameplate illumination.
- ⇨ Includes embedding box.
- ⇨ Dimensions: external: 134(W) x 148(H)mm.
embedded: 125(W) x 140(H) x 56(D)mm.

Electronic characteristics.

- ⇨ Digital video systems with 3 wires + coaxial cable or 4 wires + twisted pair installations.
- ⇨ CCD b/w or color camera with infrared or white leds respectively, for night conditions illumination.
- ⇨ Electronic call with acoustic acknowledgement signal.
- ⇨ On systems with several access door panels:
 - ☞ Switching units are not required.
 - ☞ Handset hang recognition that removes busy channel fixed times.
 - ☞ Acoustic acknowledgement signals at the door panel for busy channel indication.
- ⇨ To be used with 12Vd.c. lock releases.

5110/P

1 way video kit with 3+ coax installation, composed by:
One push button door panel.
Platea Plus monitor with connector.
FA-PLUS/C power supply.
12Vd.c. lock release.

5110/COLOR

5110/P composition with color camera and monitor.

5220/P

2 ways video kit with 3+ coax installation, composed by:
Two push buttons door panel.
2 units of Platea Plus monitors with connectors.
FA-PLUS/C power supply.
12Vd.c. lock release.

5110/SC

1 way video kit with 4+ twisted pair installation, composed by:
One push button door panel with transmitter.
Platea Plus monitor with receiver and connector.
FA-PLUS/C power supply.

5110/SC/COLOR

5110/SC composition with color camera and monitor.

5220/SC

2 ways video kit with 4+ twisted pair installation, composed by:
Two push buttons door panel with transmitter.
2 units of Platea Plus monitor with receivers and connectors.
FA-PLUS/C power supply.



1 push button



2 push buttons



711/AL
Rain shield



811/AL
Surface box

Plus



Kits

Characteristics.

- ⇨ Casing manufactured in ABS RAL9003 white color.
- ⇨ Reversible front plate color (gray and blue colors).
- ⇨ Detachable telephone cord with connectors.
- ⇨ 4" b/w flat tube screen or "A Grade" color TFT LCD.
- ⇨ Brightness and contrast (color) adjustments.
- ⇨ High sensitivity microphone with anti-feedback filter.
- ⇨ On-Off push button with light indicator.
- ⇨ Different call reception tones depending where the call is coming from.
- ⇨ Three positions external call volume regulator.
- ⇨ Autoswitch-on and video spy functions.
- ⇨ Privacy on audio, video and door open progresses.
- ⇨ Intercommunication between 2 units in the same apartment.
- ⇨ Auxiliary devices activation by using a relay unit.
- ⇨ Input for door bell apartment push button that saves the use of a door bell.
- ⇨ Dimensions: 200(W) x 220(H) x 71(D)mm.
- ⇨ Up to 3 monitors or telephones inside of the same apartment.
- ⇨ Fully compatible with Platea Uno monitor and T-940 Plus and T-940 Uno telephones.



Platea Plus COLOR



With EL561 receiver



T-940 Plus



T-940 Uno



Platea Uno

Stadio

))) Video
))) Digital



Mechanical characteristics.

- ⇒ Front of 1.8mm thick aluminium with sandy finish.
- ⇒ Camera window manufactured in opaque polycarbonate.
- ⇒ Adjustable pan and tilt camera mechanism.
- ⇒ Inox covered push buttons.
- ⇒ Easily seen light button for nameplate illumination.
- ⇒ Includes embedding box.
- ⇒ Dimensions: external: 134(W) x 228(H)mm.
embedded: 125(W) x 220(H) x 56(D)mm.

Electronic characteristics.

- ⇒ Digital video system with 3 wires + coaxial installation.
- ⇒ 4 wires + twisted pair optional installation.
- ⇒ CCD b/w camera with infrared leds for night illumination.
- ⇒ Privacy on audio, video and door open progresses.
- ⇒ Electronic call with acoustic acknowledgement signal.
- ⇒ On systems with several access door panels:
 - ⤷ Switching units are not required.
 - ⤷ Handset hang recognition that removes busy channel fixed times.
 - ⤷ Acoustic acknowledgement signals at the door panel for busy channel indication.

To be used with Platea Plus and Platea Uno monitors, that are fully compatible with T-940 Plus and T-940 Uno telephones.



3 push buttons

4 push buttons

5 push buttons

6 push buttons

8 push buttons

10 push buttons

705/AL
Rain shield

805/AL
Surface box

Plus Packs



5131

3 ways video pack with 3+ coax installation, composed by:
Three push buttons door panel.
FA-PLUS/C power supply.
12Vd.c. lock release.

5140

4 ways video pack with 3+ coax installation, composed by:
Four push buttons door panel.
FA-PLUS/C power supply.
12Vd.c. lock release.

5150

5 ways video pack with 3+ coax installation, composed by:
Five push buttons door panel.
FA-PLUS/C power supply.
12Vd.c. lock release.

5261

6 ways video pack with 3+ coax installation, composed by:
Six push buttons door panel.
FA-PLUS/C power supply.
12Vd.c. lock release.

5280

8 ways video pack with 3+ coax installation, composed by:
Eight push buttons door panel.
FA-PLUS/C power supply.
12Vd.c. lock release.

5210

10 ways video pack with 3+ coax installation, composed by:
Ten push buttons door panel.
EL516 encoder push buttons module.
FA-PLUS/C power supply.
12Vd.c. lock release.



Platea Plus



Platea Uno



T-940 Plus



T-940 Uno



Stadico
))) Co
))) Dig

Further to the characteristics
of the previous page packs:

- ⇒ Illuminated keypad with inox covered push buttons.
- ⇒ 2 x 16 characters bias lighted LCD display.
- ⇒ Optional 3202/AL informative module to show operating instructions and apartment codes.
- ⇒ Digital video system with 3 wires + coaxial installation or audio digital system with 4 common wires.
- ⇒ 4 wires + twisted pair optional installation.
- ⇒ CCD b/w or color camera with light emitters for night vision.
- ⇒ Management of up to 255,000 monitors or telephones.
- ⇒ Easy system programming through the keypad or computer.
- ⇒ Selectable language for display messages and programming menus.
- ⇒ Display messages of the system status.
- ⇒ Programmable lock release activation time between 0 and 99 seconds.
- ⇒ Two calling methods: direct entry of the apartment code or by searching the tenant name in the repertory.
- ⇒ Four codes access control of four digits each. The third code can be temporary disabled.
- ⇒ Repertory content transmission to other door panels or porter's exchanges through the installation wires.



Coded audio
door panel



Coded video
door panels



3202/AL
Informative module



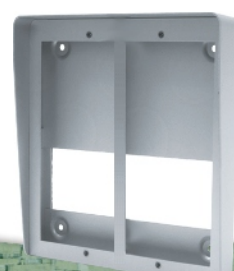
705/AL 1 module
rain shield



875/AL 1 module
surface box



725/AL 2 modules
rain shield



825/AL 2 modules
surface box

Plus



Packs

4403

Coded audio pack with 4 wires installation, composed by:
Coded audio door panel.
FA-PLUS power supply.
12Vd.c. lock release.

5403

Coded video pack with 3+ coax installation, composed by:
Coded b/w video door panel.
FA-PLUS power supply.
12Vd.c. lock release.

5403/Color

Coded video pack with 3+ coax installation, composed by:
Coded color video door panel.
FA-PLUS power supply.
12Vd.c. lock release.



Platea Plus
Platea Plus Color



Platea Uno



T-940 Plus



T-940 Uno

Stadio

))) ACC



Mechanical characteristics.

- ⇨ Front of 1.8mm thick aluminium with sandy finish.
- ⇨ Numeric keypad with inox covered buttons or polycarbonate window with proximity reader.
- ⇨ Includes embedding box.
- ⇨ Dimensions: external: 134(W) x 265(H)mm.
embedded: 125(W) x 257(H) x 56(D)mm.
- ⇨ Surface installation is available by using 872/AL optional surface box, of 32mm. depth only that also includes the rain shield.

Numeric keypad electronic characteristics.

- ⇨ System programming through the keypad.
- ⇨ Acoustic acknowledgement signal on push.
- ⇨ Two output relays of 8 activation codes each.
- ⇨ 4, 5 or 6 digits programmable codes.
- ⇨ Relay 1: two contacts, n/c or n/o, single shoot or stable.
- ⇨ Relay 2: three contacts, single shoot.
- ⇨ Programmable single shoot mode activation time.

Proximity reader electronic characteristics.

- ⇨ Compatible with PROXCARD or NEOKEY tags.
- ⇨ Up to 500 users in one or several memory addresses.
- ⇨ System programming through the internal keypad.
- ⇨ 1 output single shoot relay of 3 seconds activation time.



1 push button
Proximity reader



1 push button
Numeric keypad



2 push buttons
Proximity reader



2 push buttons
Numeric keypad

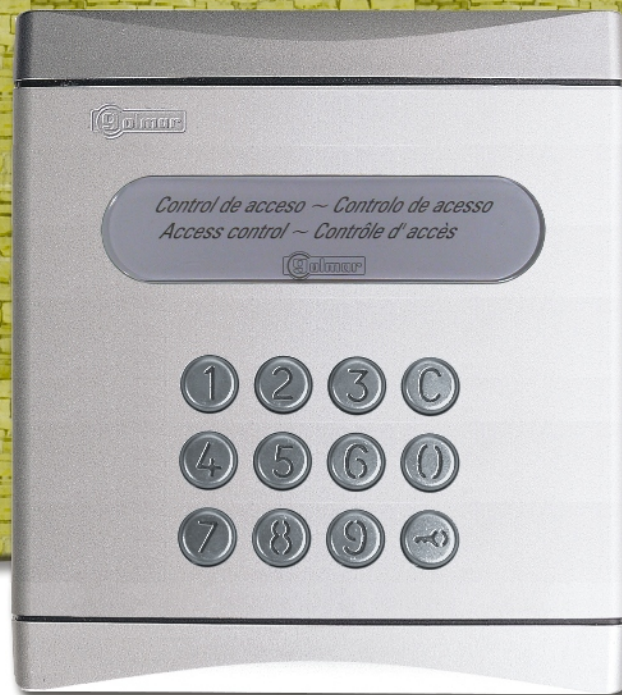


721/AL
Rain shield



872/AL
Surface box

D Plus
ess((



4301/AL

Access control kit composed by:
Access control module with numeric keypad.
TF-104 transformer.
12Va.c. lock release.

4113/AL

1 way audio kit with 4+'n' installation, composed by:
Access control module with numeric keypad.
One push button door panel.
T-900 electronic call telephone.
TF-104 transformer.

4223/AL

2 ways audio kit with 4+'n' installation, composed by:
Access control module with numeric keypad.
Two push buttons door panel.
2 units of T-900 electronic call telephone.
TF-104 transformer.

4112/AL

1 way audio kit with 4+'n' installation, composed by:
Access control module with proximity reader.
One push button door panel.
T-900 electronic call telephone.
TF-104 transformer.

4222/AL

2 ways audio kit with 4+'n' installation, composed by:
Access control module with proximity reader.
Two push buttons door panel.
2 units of T-900 electronic call telephone.
TF-104 transformer.



Access control only
Numeric keypad



711/AL
Rain shield



871/AL
Surface box



Proxcard ISO card



Neokey tag



SISTEMAS DE COMUNICACIÓN

C/. Silici, 13
Pol. Ind. Famadas
08940 Cornellà de Llobregat (Barcelona-Spain)

Tel. +34 934 800 696
Fax +34 934 742 404
golmar@golmar.es
www.golmar.es



DISTRIBUTED BY

